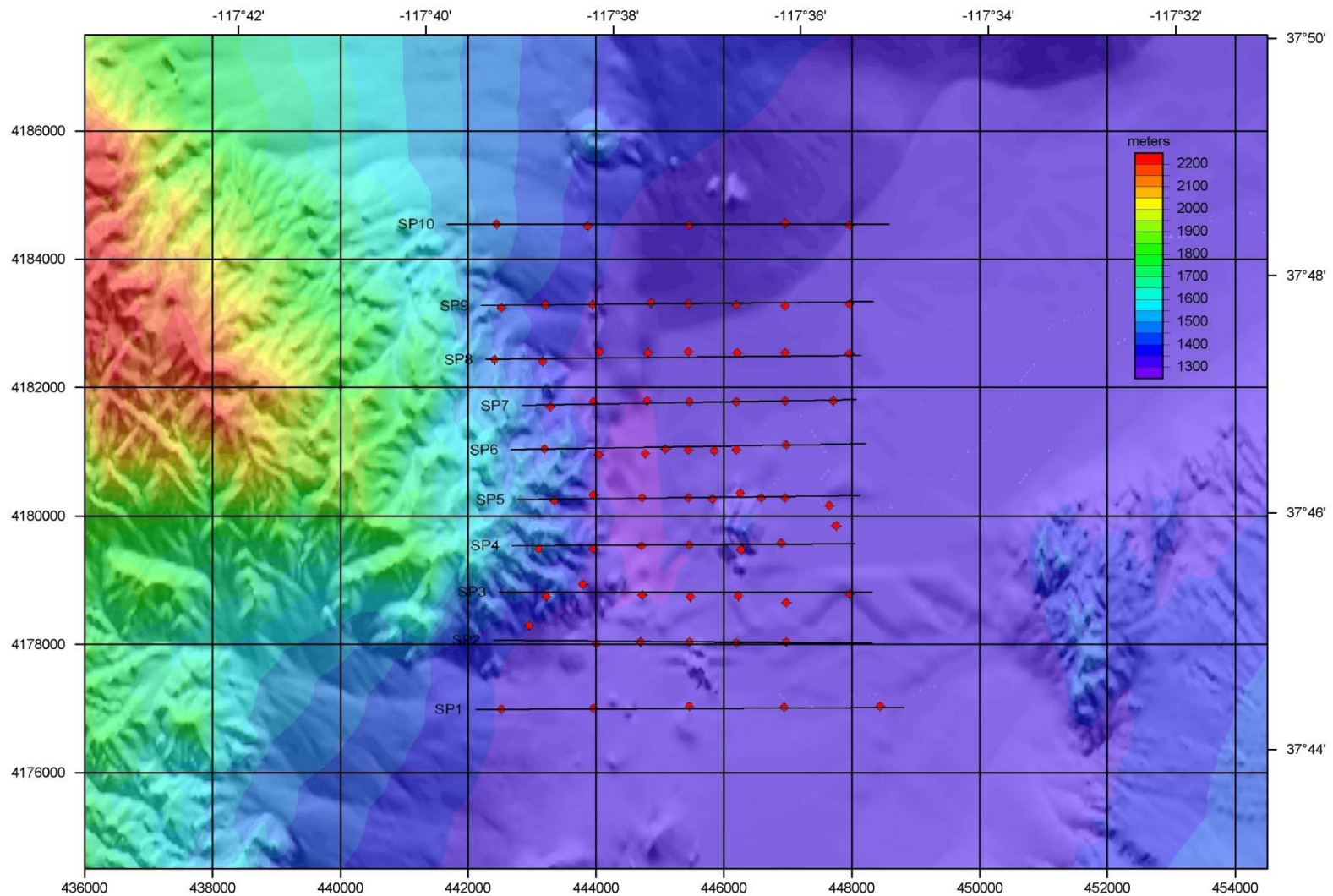


Silver Peak MT Survey 2009

3D inversion modelling results

March 11, 2010

MT Station and Profile Locations



Upgraded 3D inversion code

In this document we present a new 3D inversion model generated by the recently upgraded 3D inversion algorithm.

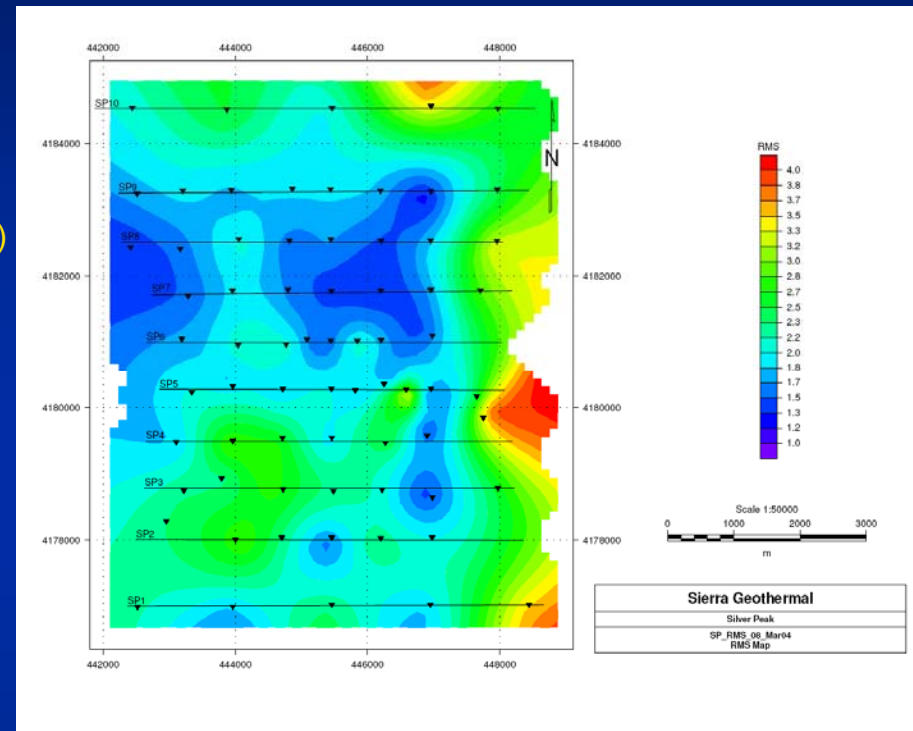
Please see AL_Model_08_Mar01.ppt document for the upgraded features of the 3D inversion algorithm.

3D Model

Inversion parameters:

- dx,dy (horiz cell dimensions) 150m
- top cell thickness 10m
- deeper cell thickness 100m
- mesh rotation 0° N
- mesh dimensions 72x74x50 km (78x88x141 cells)
- number of sites 70
- frequency range 0.003 to 1000 Hz
- frequency per decade 4
- start model 20 ohm.m
- iterations (cumulative) 40
- Tau (regularizer smoothing) 0.05 (40 iter.)
- RMS 2.119
- resistivity bounds 0.1-10000

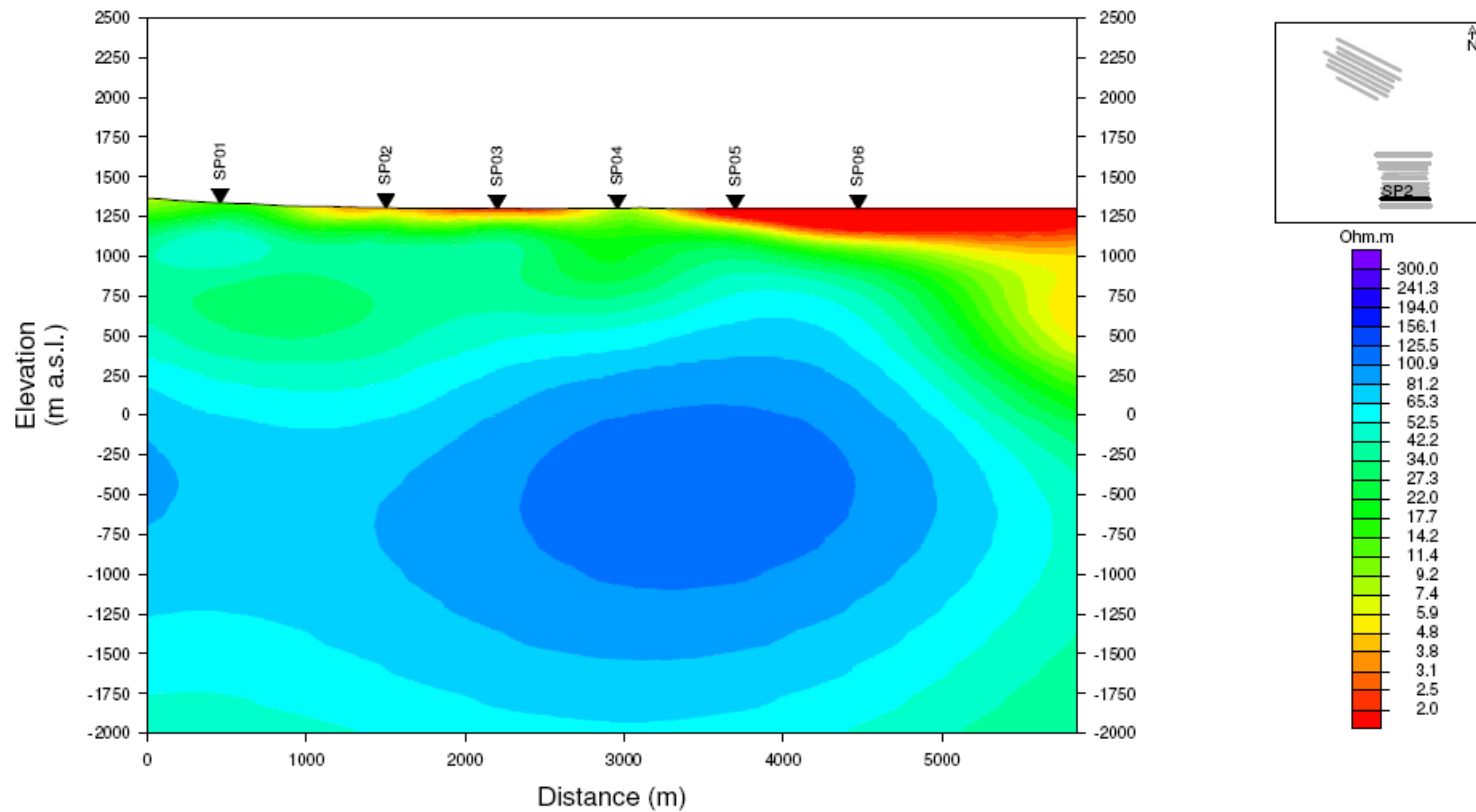
Inversion Results: RMS



Gridding parameters for following sections and map plots:

- dx, dy 150m
- dz 40m

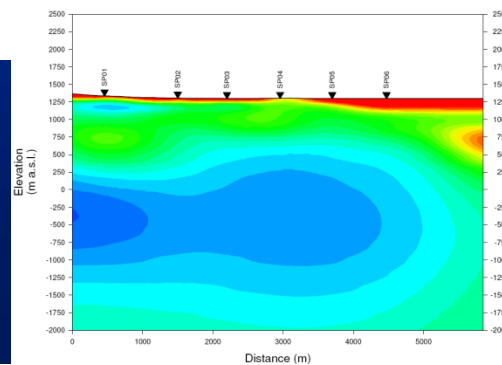
Profile SP2



Horizontal Scale 1 : 35000
Vertical Scale 1 : 35000

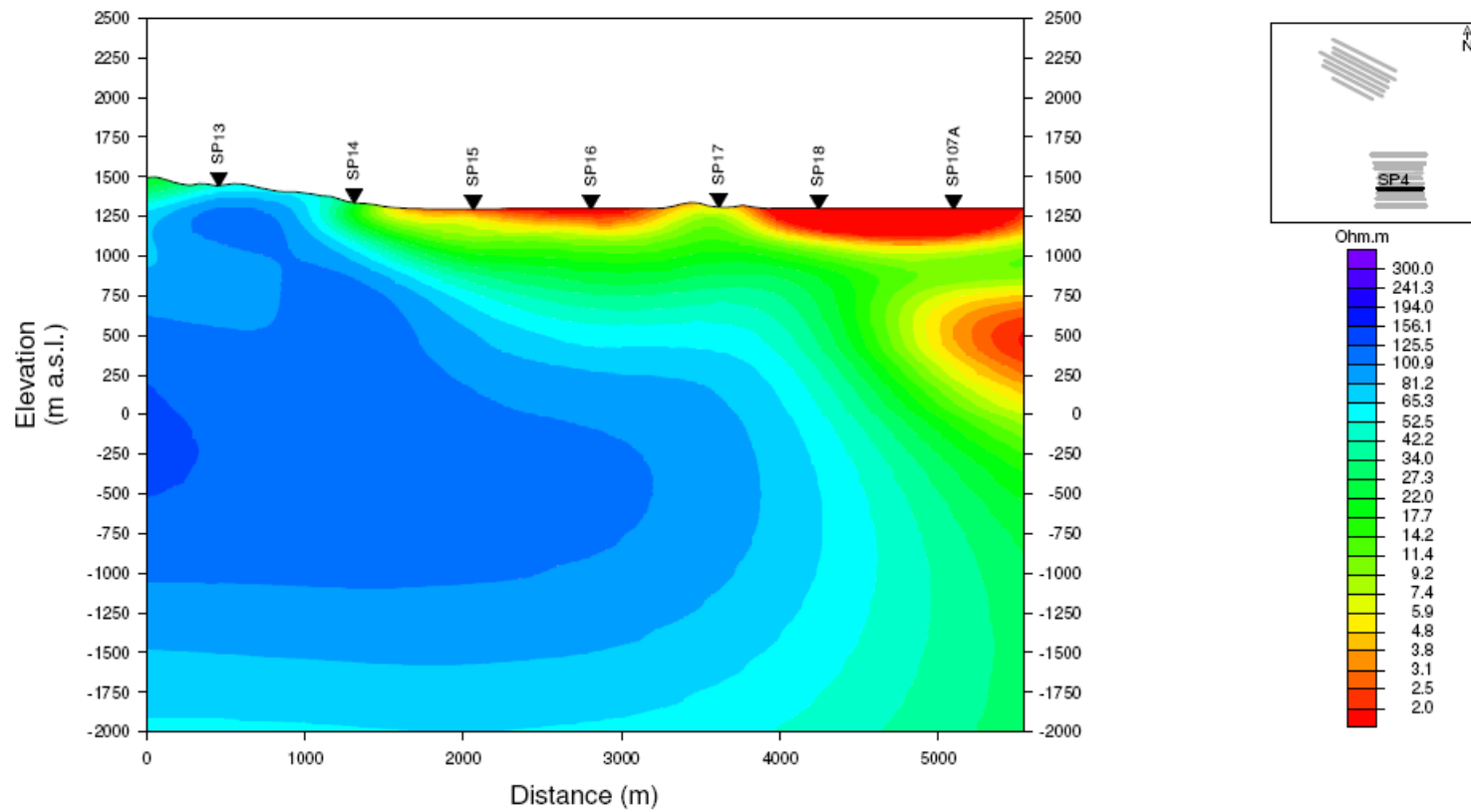
Vertical Exaggeration = 1

Sierra Geothermal
Silver Peak
SP2
Model: 08_Mar04



Previous model (06_Jan25)

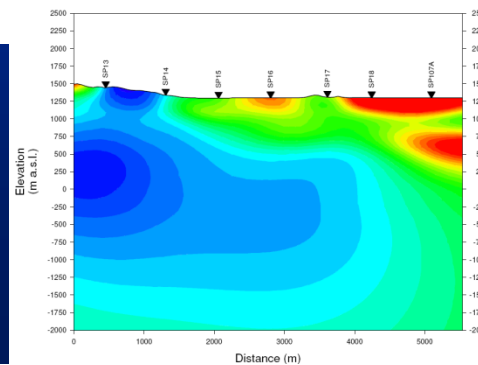
Profile SP4



Horizontal Scale 1 : 35000
Vertical Scale 1 : 35000

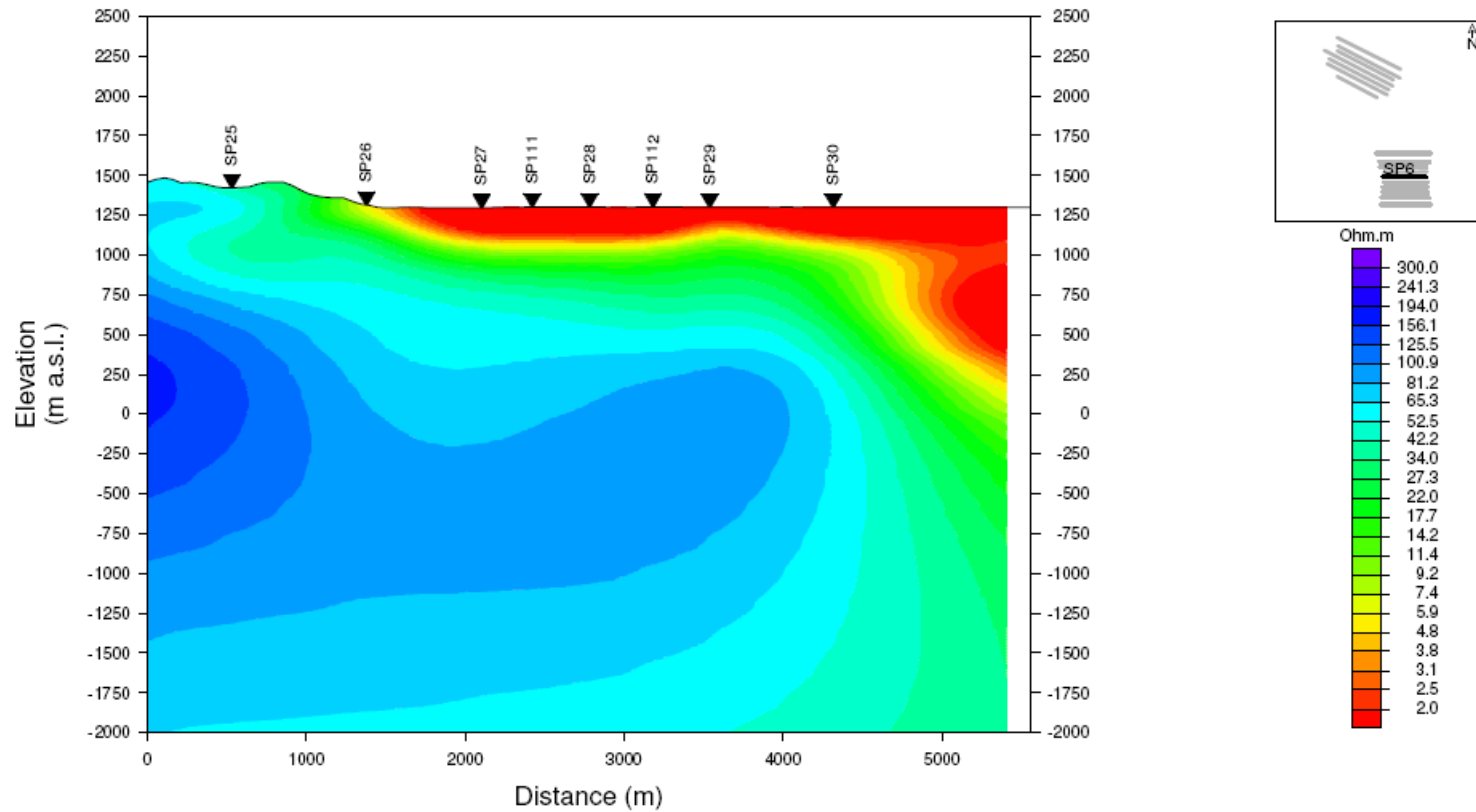
Vertical Exaggeration = 1

Sierra Geothermal
Silver Peak
SP4
Model: 08_Mar04



Previous model (06_Jan25)

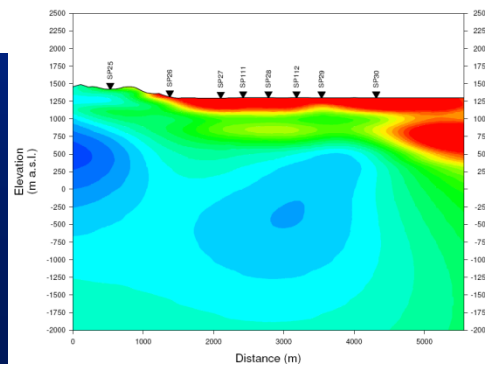
Profile SP6



Horizontal Scale 1 : 35000
Vertical Scale 1 : 35000

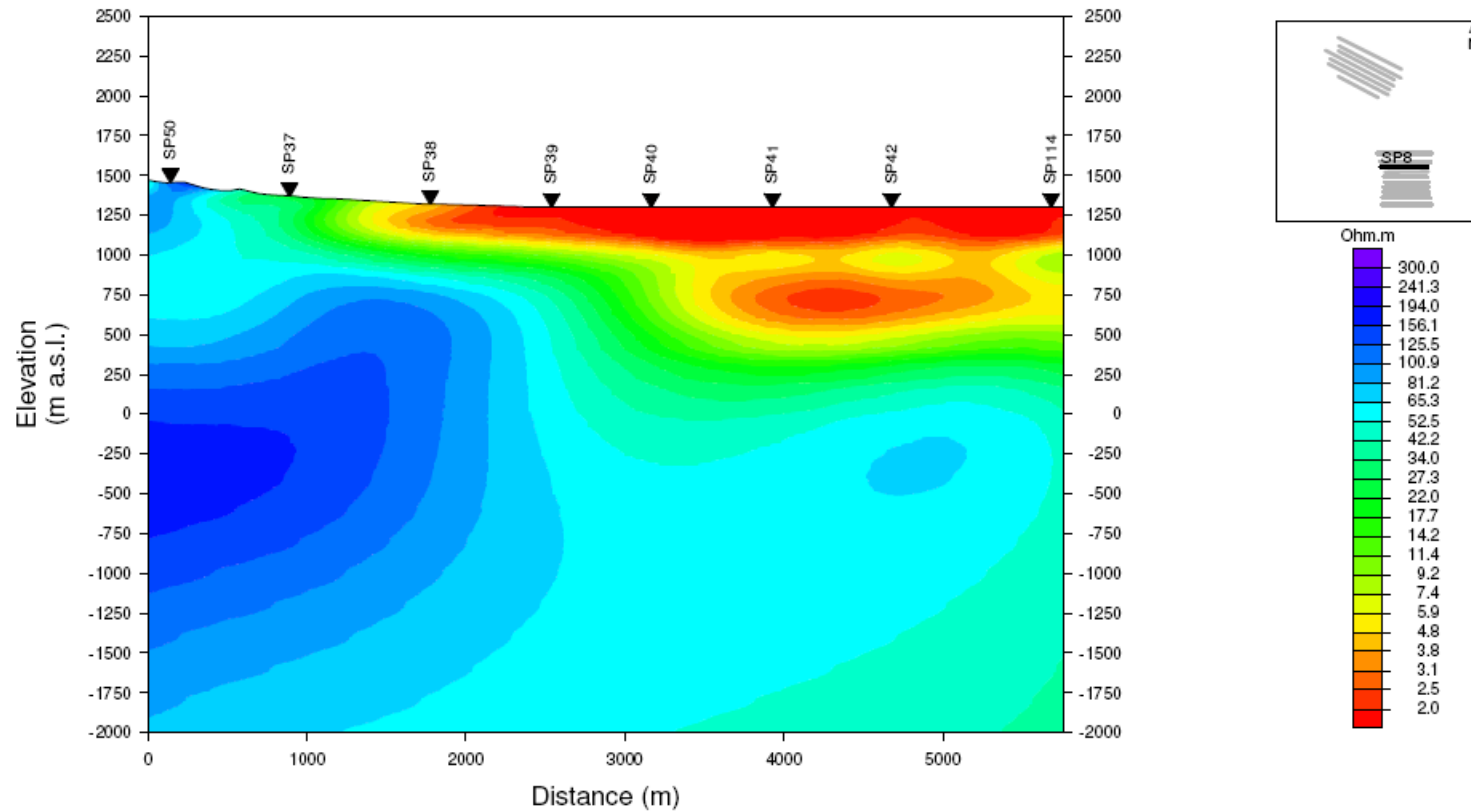
Vertical Exaggeration = 1

Sierra Geothermal
Silver Peak
SP6
Model: 08_Mar04



Previous model (06_Jan25)

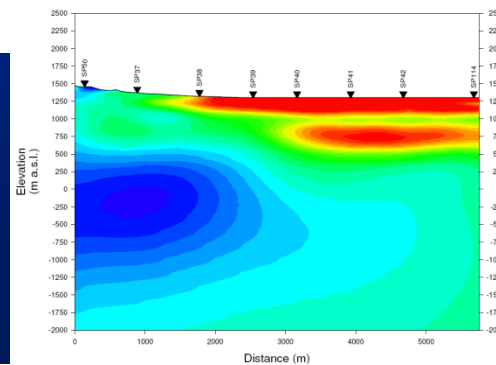
Profile SP8



Horizontal Scale 1 : 35000
Vertical Scale 1 : 35000

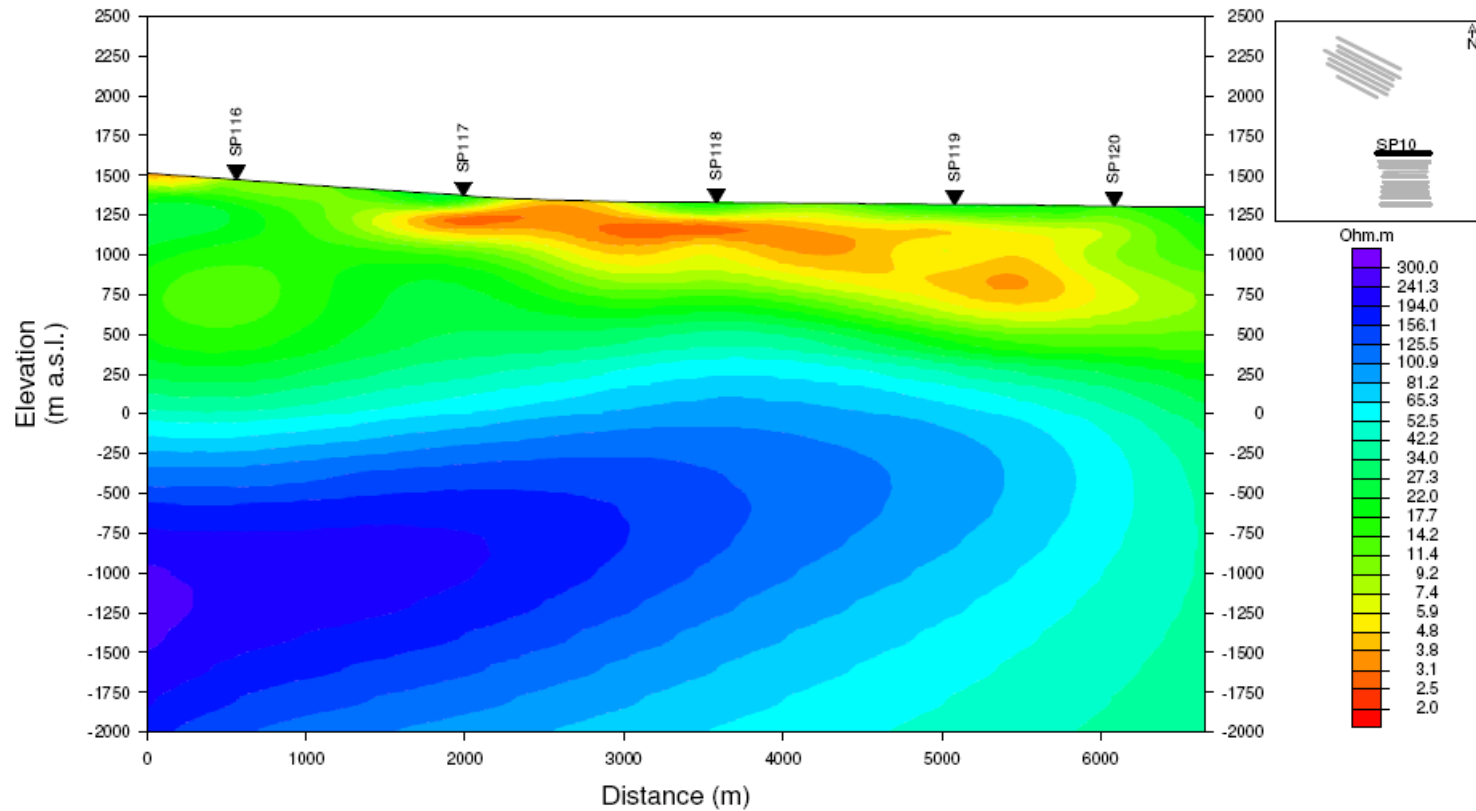
Vertical Exaggeration = 1

Sierra Geothermal
Silver Peak
SP8
Model: 08_Mar04



Previous model (06_Jan25)

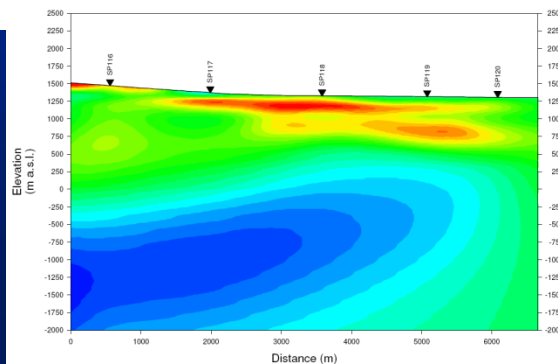
Profile SP10



Horizontal Scale 1 : 35000
Vertical Scale 1 : 35000

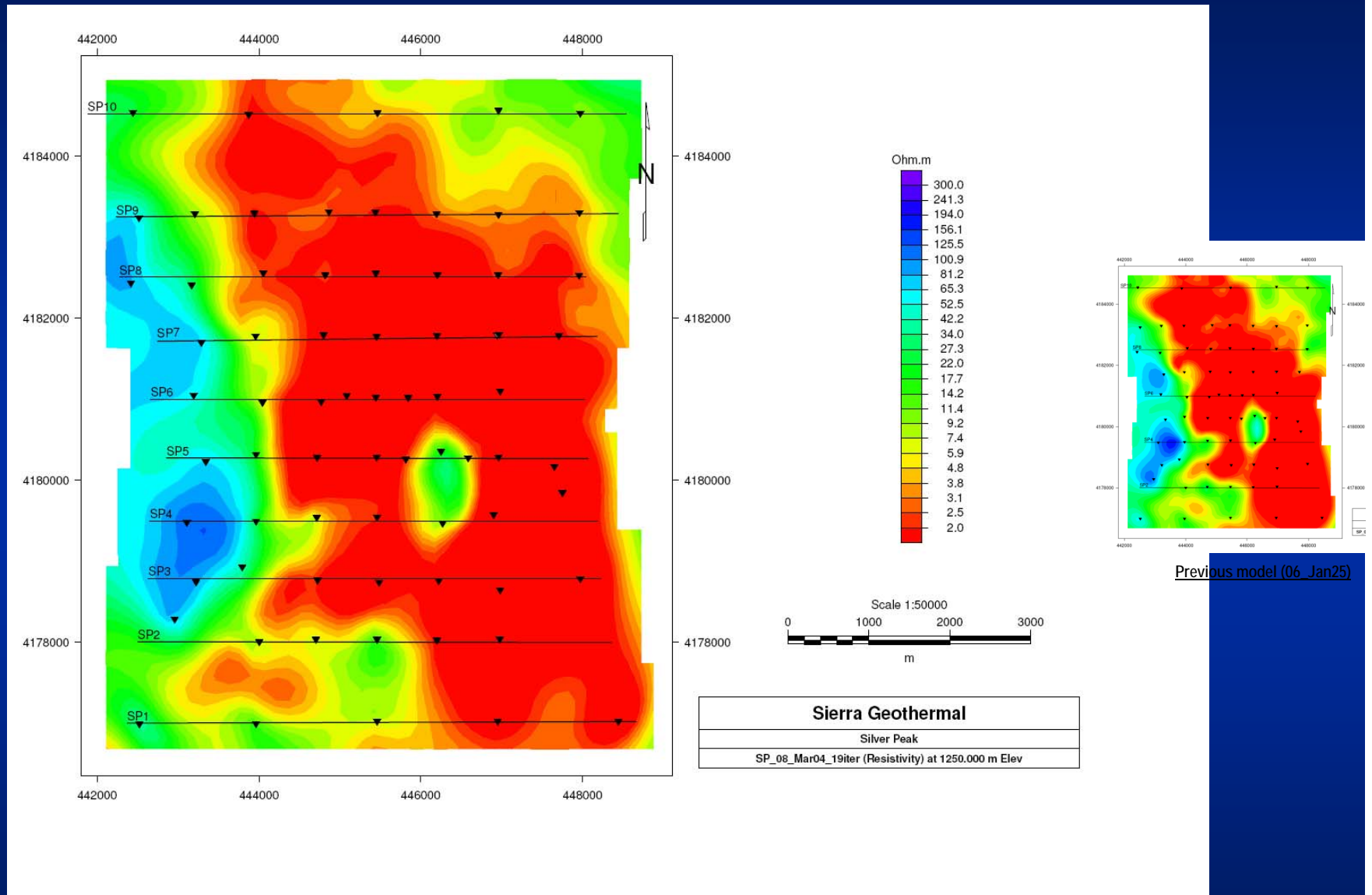
Vertical Exaggeration = 1

Sierra Geothermal
Silver Peak
SP10
Model: 08_Mar04

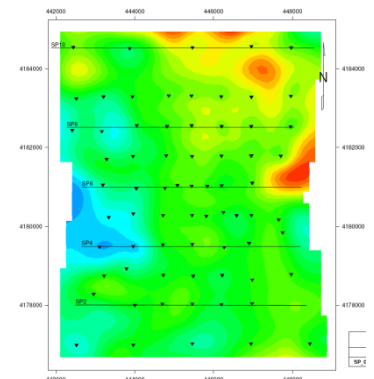
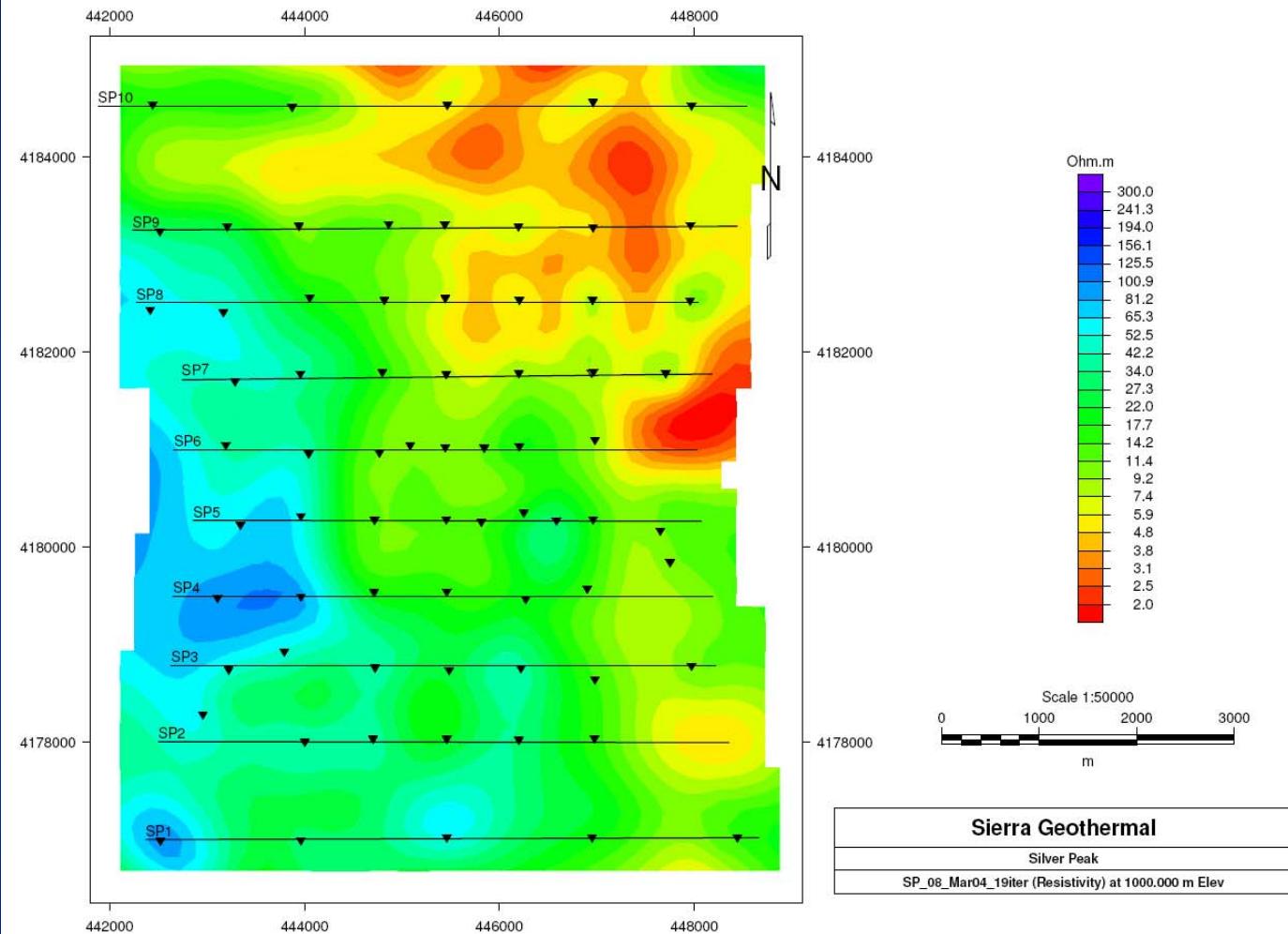


Previous model (06_Jan25)

Resistivity slice at 1250m msl

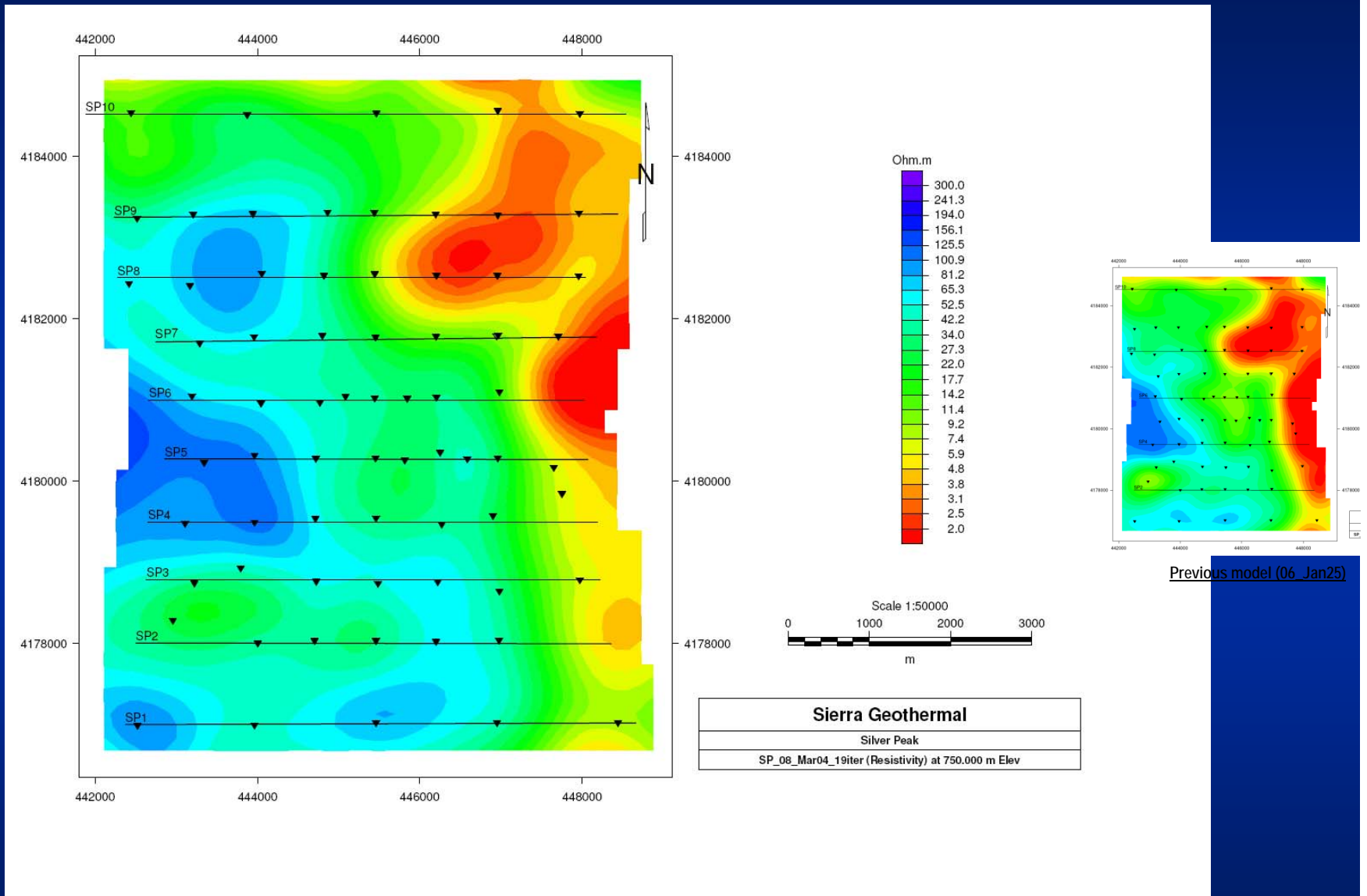


Resistivity slice at 1000m msl

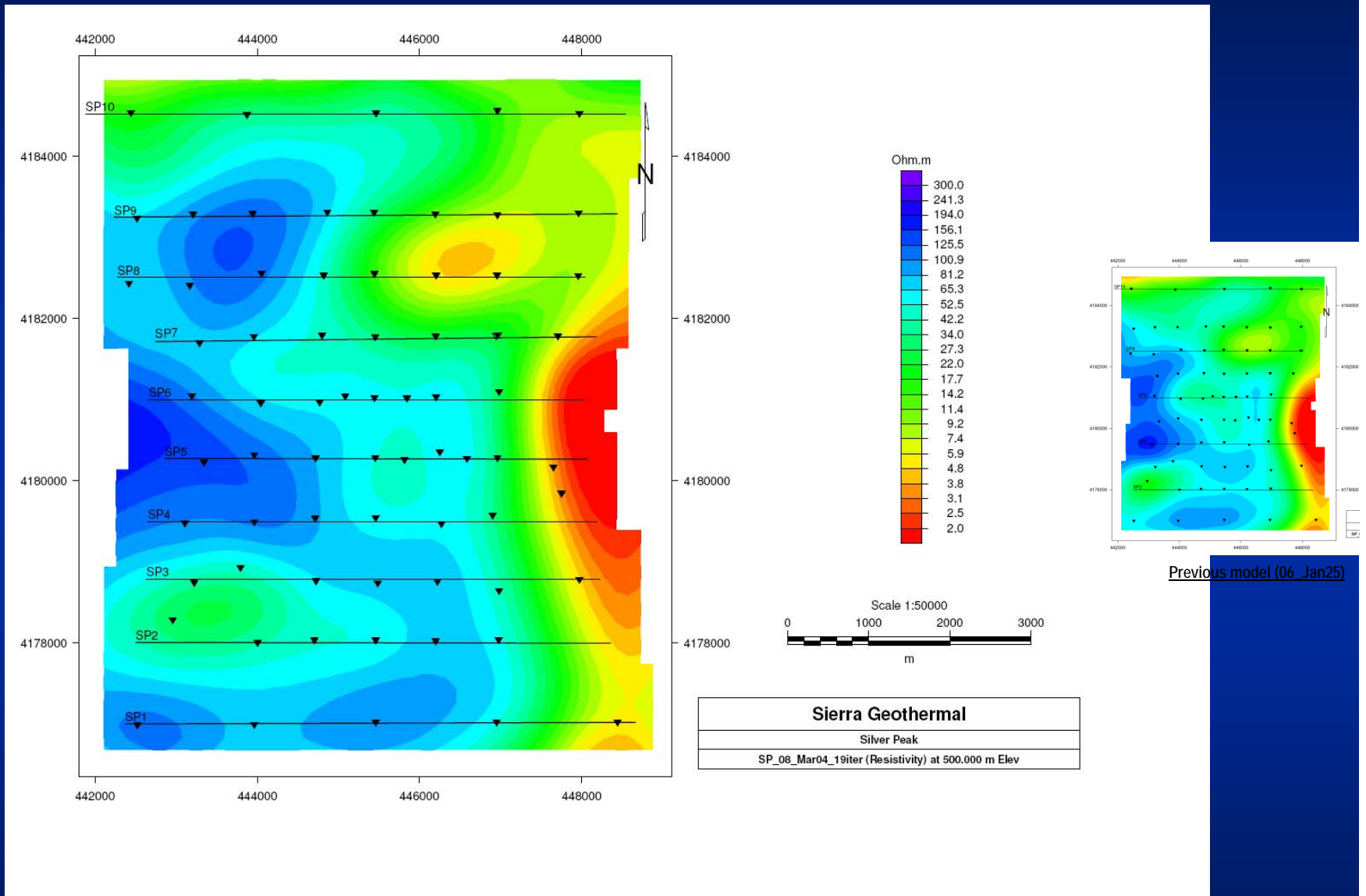


Previous model (06_Jan25)

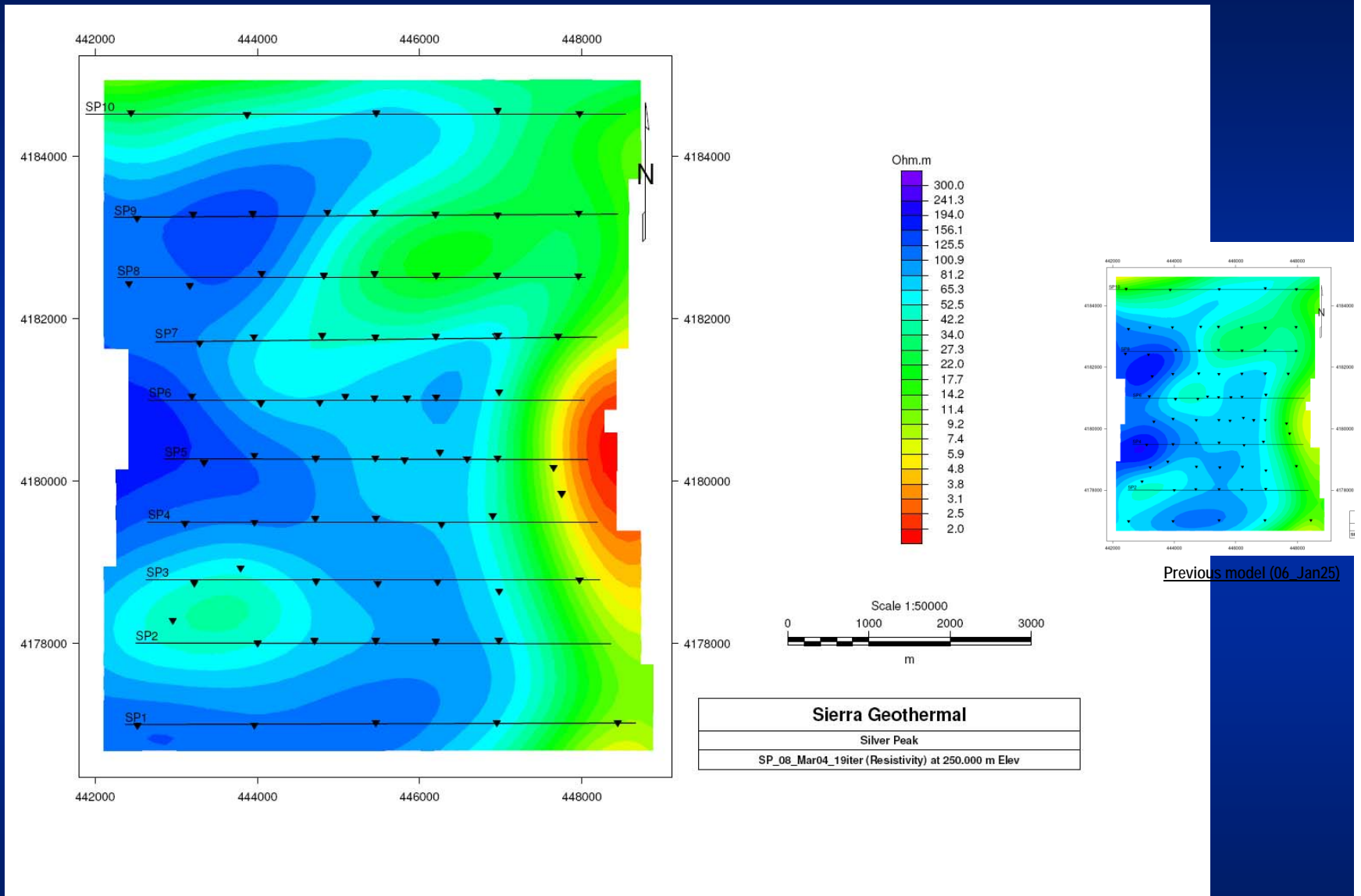
Resistivity slice at 750m msl



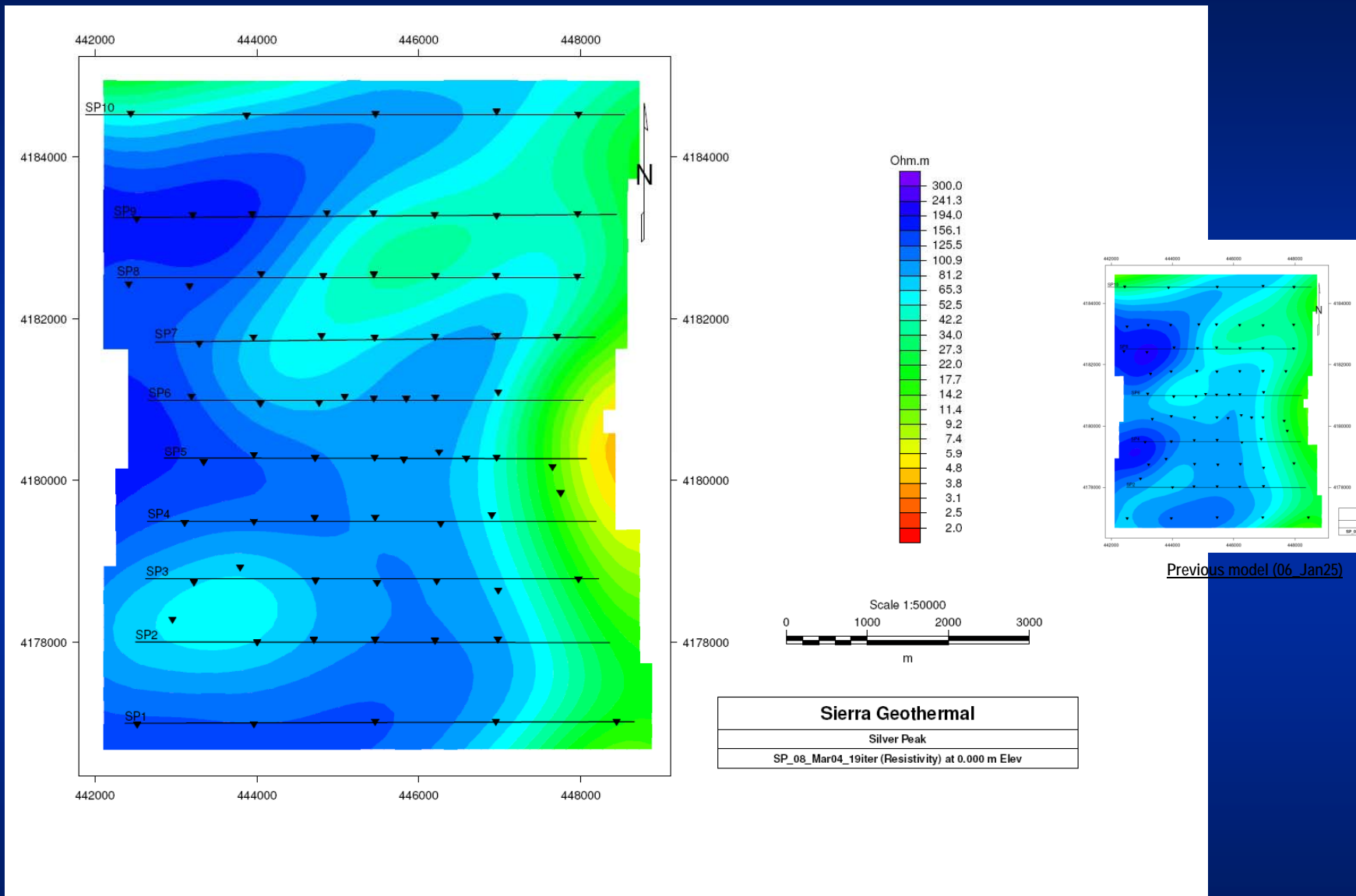
Resistivity slice at 500m msl



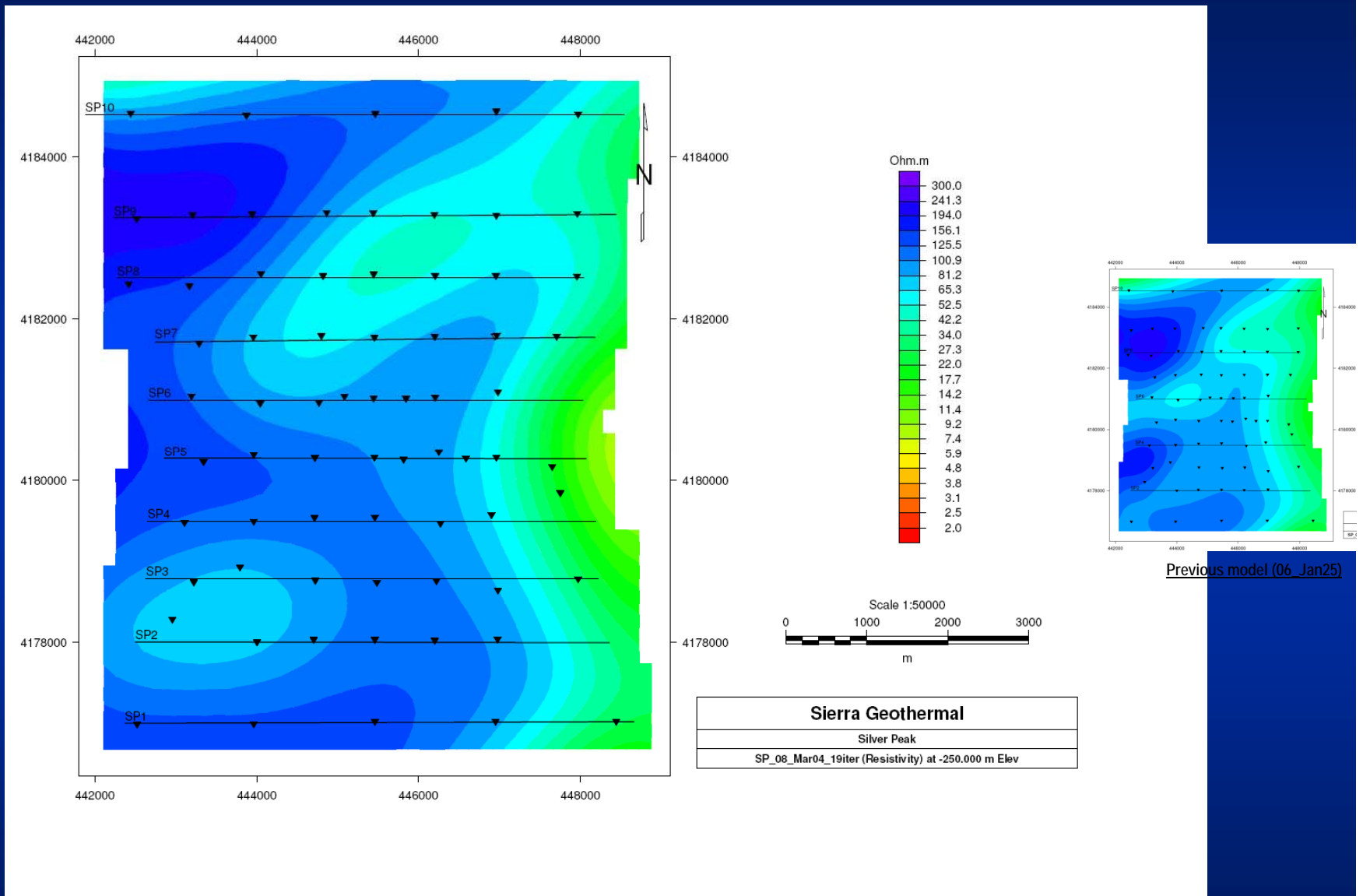
Resistivity slice at 250m msl



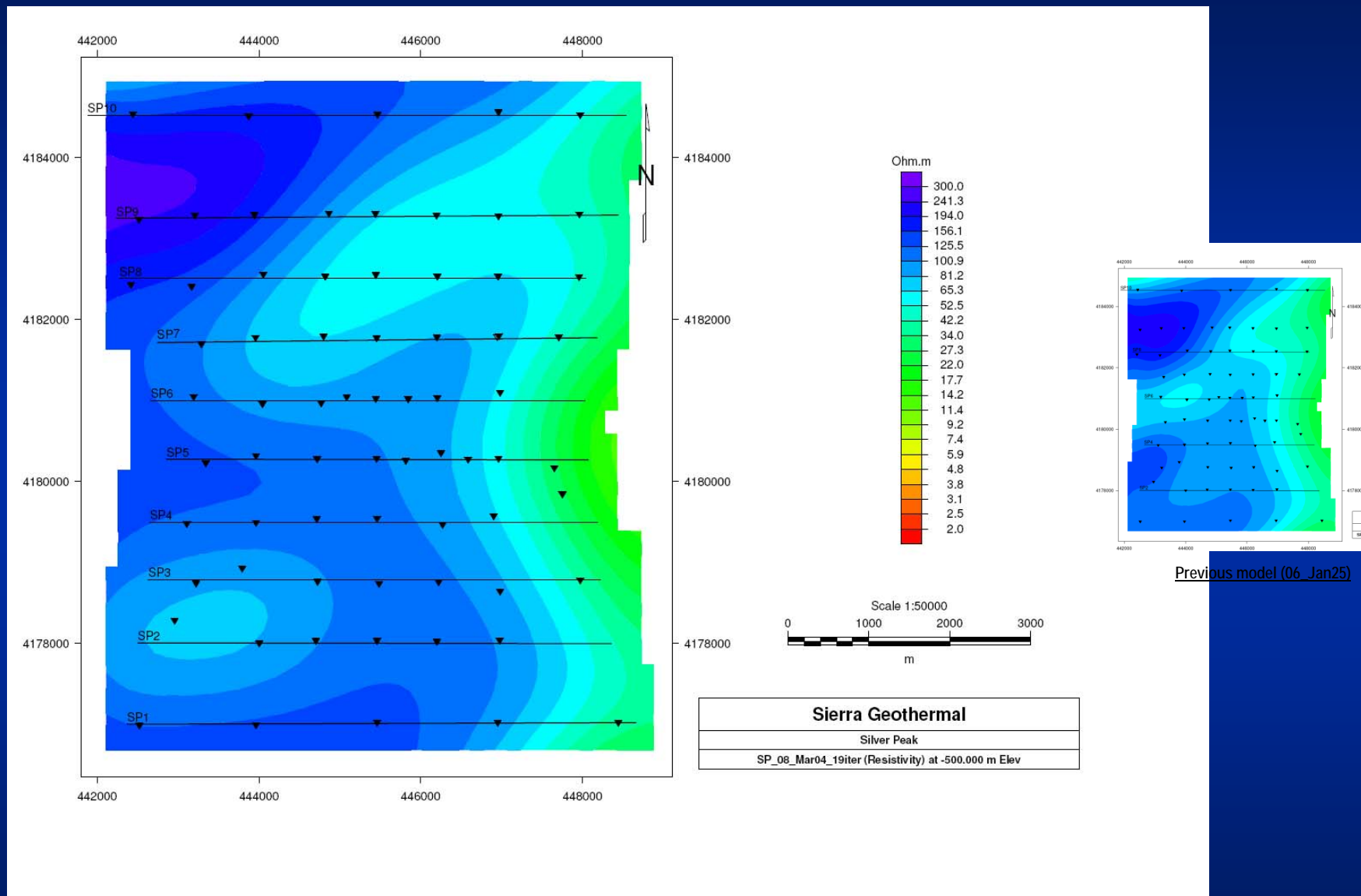
Resistivity slice at 0m msl



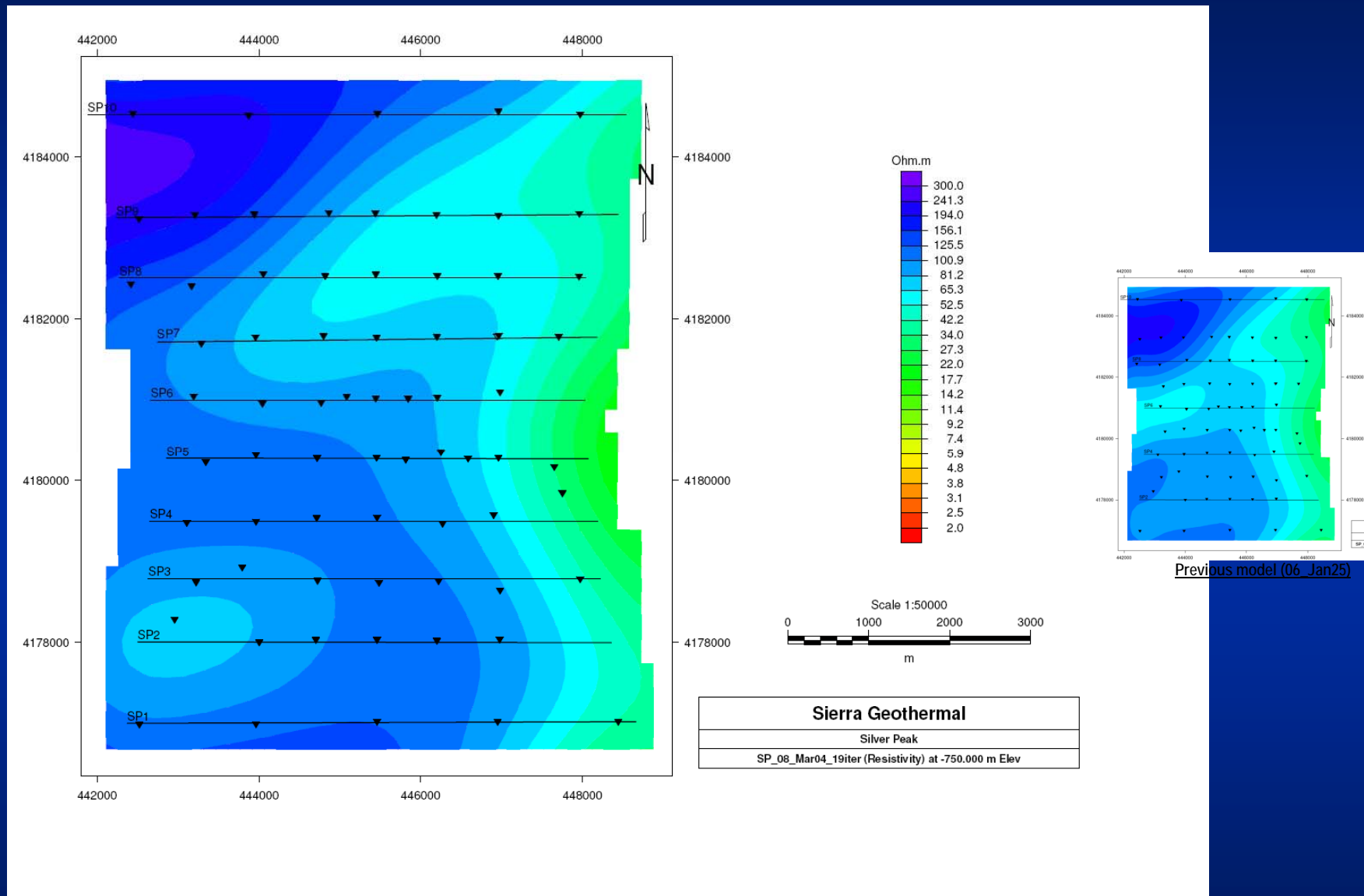
Resistivity slice at -250m msl



Resistivity slice at -500m msl



Resistivity slice at -750m msl



Resistivity slice at -1000m msl

